

Replacing the Drum Unit

The FAX/MFC uses a drum unit to create the print images on paper. If the LCD shows **CHANGE DRUM SOON**, the drum unit is near at the end of its life. Purchase a new drum unit to replace the current one.

Even if the LCD shows **CHANGE DRUM SOON**, you may be able to continue to print without replacing the drum unit for a while. However, if there is a noticeable deterioration in the output print quality even before **CHANGE DRUM SOON** is shown, then the drum unit should be replaced. You should clean the FAX/MFC when you replace the drum unit.

! Caution

When removing the drum unit, handle it carefully because it contains toner. When you replace the drum unit, you should clean the FAX/MFC.

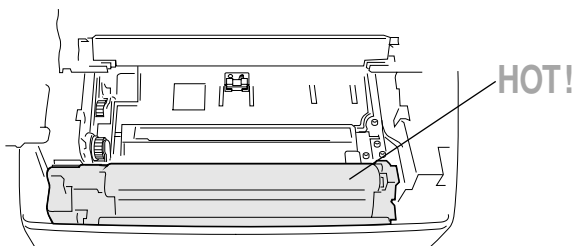


The drum unit is a consumable item, and it is necessary to replace it periodically. There are many factors that determine the actual drum life, such as temperature, humidity, type of paper and toner that you use and the number of pages per print job, etc. The drum life is estimated at approximately 20,000 pages at continuous printing and 8,000 pages at 1 page per job. The actual number of pages your drum will print may be significantly less than these estimates. Because we have no control over the many factors that determine the actual drum life, we cannot guarantee a minimum number of pages that will be printed by your drum.

For best performance, use only a genuine Brother toner cartridge. The product should be used only in a clean, dust-free environment with adequate ventilation.

▲ WARNING

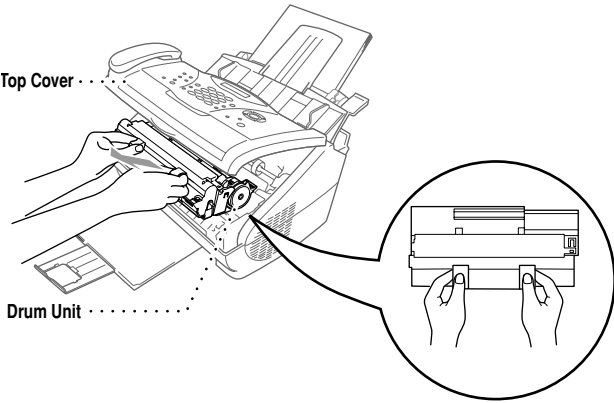
Just after you have used the FAX/MFC, some internal parts of the machine are extremely **HOT!** So please be careful.



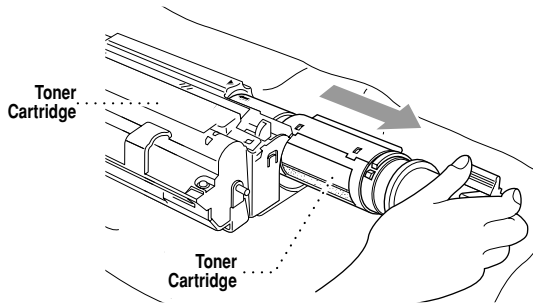
▲ Inside the Fax Machine

Follow these steps to replace the drum unit:

- 1 Make sure you close the document tray and the extension.
- 2 Open the top cover.
- 3 Remove the used drum unit. Place the drum unit on a drop cloth or large piece of disposable paper to avoid spilling and scattering the toner.

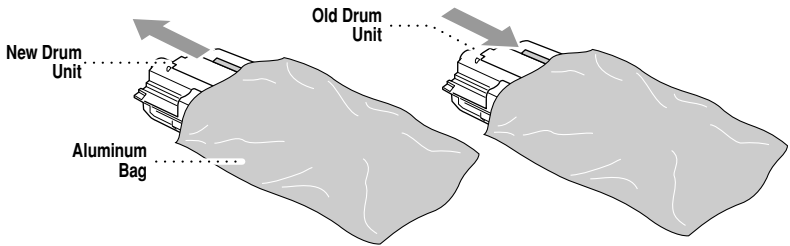


- 4 Remove the toner cartridge from the drum unit and keep it in a safe place. For more information, see *Replacing the Toner Cartridge*, page 20-19.



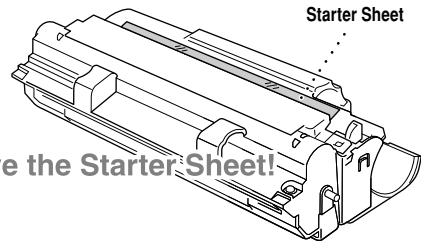
Discard the used drum unit according to local regulations. If you are not sure of them, call your local Sanitation Department. Be sure to seal the drum unit tightly so toner powder does not spill out of the unit. When discarding used drum units, keep them separate from domestic garbage.

- 5 Place the used drum unit into the aluminum bag and discard it according to local regulations.



Caution

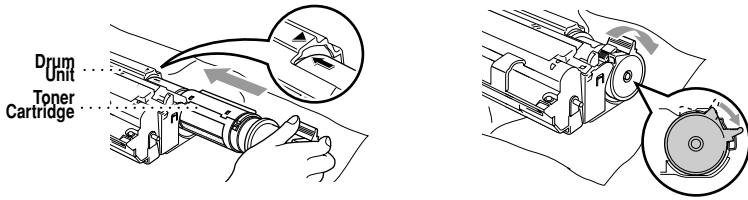
Do NOT remove the clear plastic starter sheet!



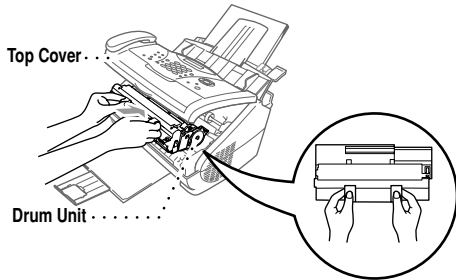
Do NOT remove the Starter Sheet!

- Wait to unpack the drum unit until immediately before installing it into the FAX/MFC.
If an unpacked drum unit is subjected to excessive direct sunlight or room light, the unit may be damaged.
- Handle the toner cartridge and the drum unit carefully because they contain toner. If toner scatters and your hands or clothes get dirty, immediately wipe or wash with cold water.

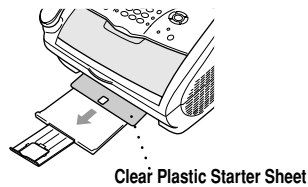
- 6 Reinstall the toner cartridge into the new drum unit. For more information, see *Replacing the Toner Cartridge*, page 20-19.



- 7 Holding the new drum unit by its handles, install it. Close the top cover.



- 8 The FAX/MFC will eject the clear plastic starter sheet automatically.



! Caution

- Do not touch the scanner window with your finger.
- Handle the toner cartridge and drum unit carefully because they contain toner. If toner scatters and your hands or clothes get dirty, immediately wipe or wash it off with cold water.